

For Lease

Dixie Business Park

6325 Dixie Road

Mississauga, ON



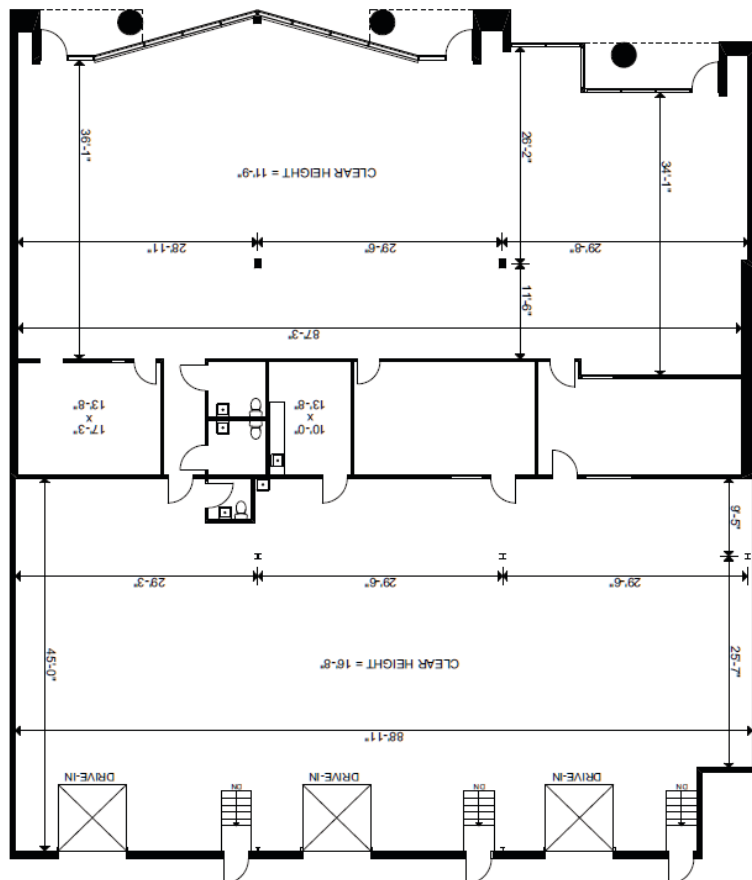
10-12

Total Square Feet 9,070 SF

Availability: Immediate

Key features:

- 4,950 sf. of office built out
- 11'9" - 16'8" clear height
- 3 drive-in doors
- Kitchen
- 3 washrooms
- Net Rent: \$16.95 psf
- 2025 TMI: \$8.36 psf



Tanner Witton
Director, Leasing
Sales Representative
QuadReal Property Group Brokerage

T 416-673 7817
E tanner.witton@quadreal.com
W www.quadreal.com

