



Retail Leasing Availabilities—

549 King St. E

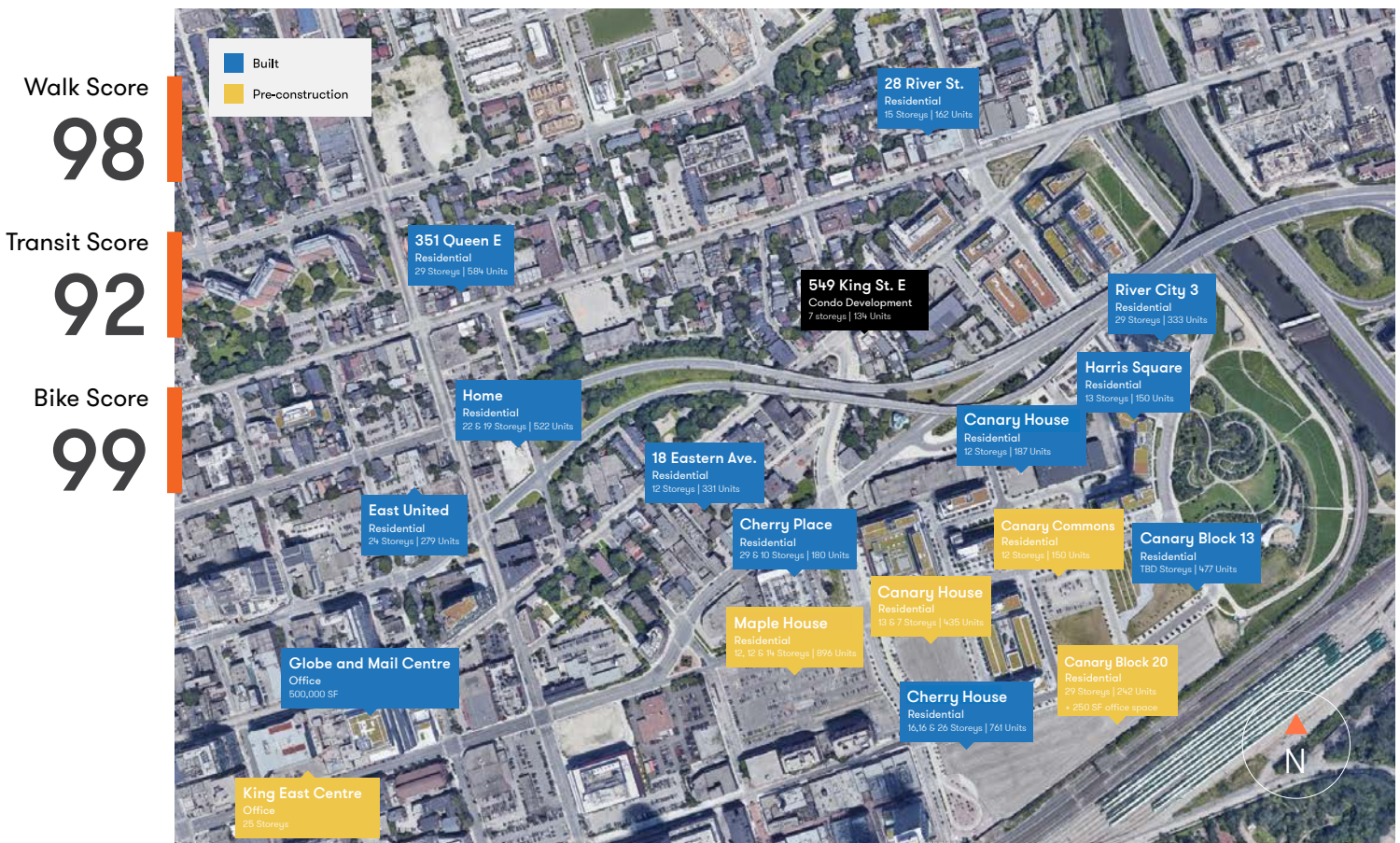


Corktown

- Minutes from the downtown core, and surrounded by notable neighborhoods including Riverside, Canary District, Distillery District, and the rapidly gentrifying Regent Park, Corktown is surrounded by a wealth of key amenities.
- Commuters are served by the convenience of the 504 King streetcar. The active and outdoorsy take advantage of Corktown Common park, Lawren Harris Square, Underpass Park, Percy Park, the CooperKoo YMCA, amongst others. Foodies flock to the staples in the neighborhood like Impact Kitchen, BarBurrito and Fusilli.
- Over 8 different colleges in the immediate area.

Demographics

Total Population	20,506
Average Household Income	\$83,000
Average Age	39



About the building —

Your new space at the Carnaby

Located at the intersection of Sumach Street and King Street East, 549 King is an intimate boutique condo and loft building with contemporary styles and historic charm.

It is now joined by a growing list of residential developments that have brought over 6,100 new residential units within a 500M radius.

Retail & Amenities

Nearby Retail

Impact Kitchen, Gusto 501, Reyna on King, Fusilli Ristorante, Sukothai

Nearby Transit

504A King St. E. streetcar

Total Retail SF

5,426 SF

Residential Units

192

Type

Residential

Year built

2013

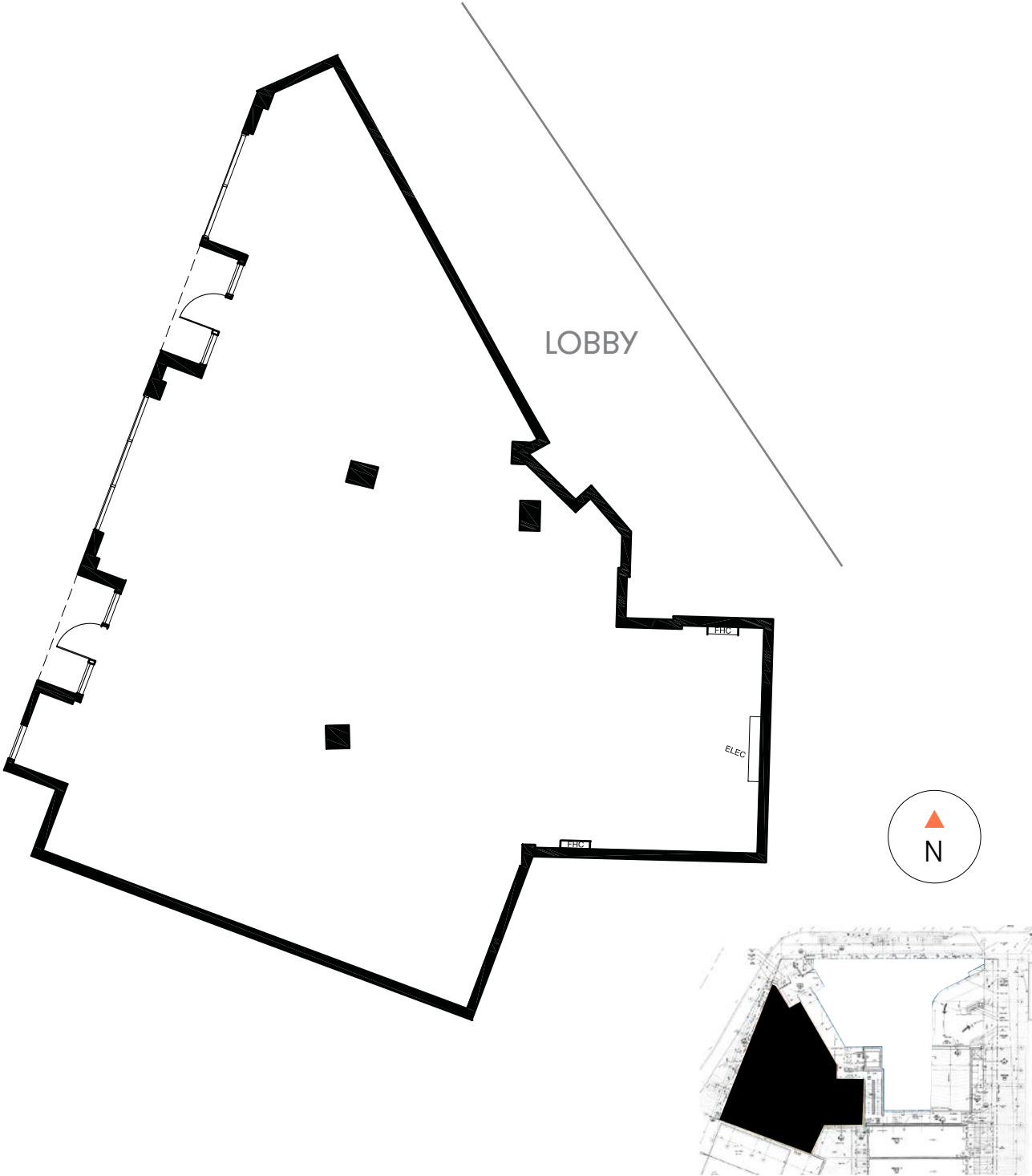
Floors

8



Unit B

Size/SF	Additional Rent	Possession	Frontage
2,755 SF	\$18.25 /SF	Immediate	71 FT facing Sumach Street





dream 

Leasing contacts

Melody Irankhah
Manager, Leasing

647.308.3529
mirankhah@dream.ca

dream.ca