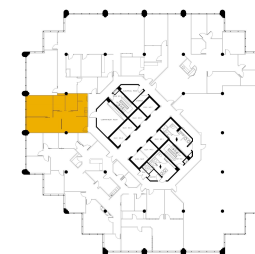
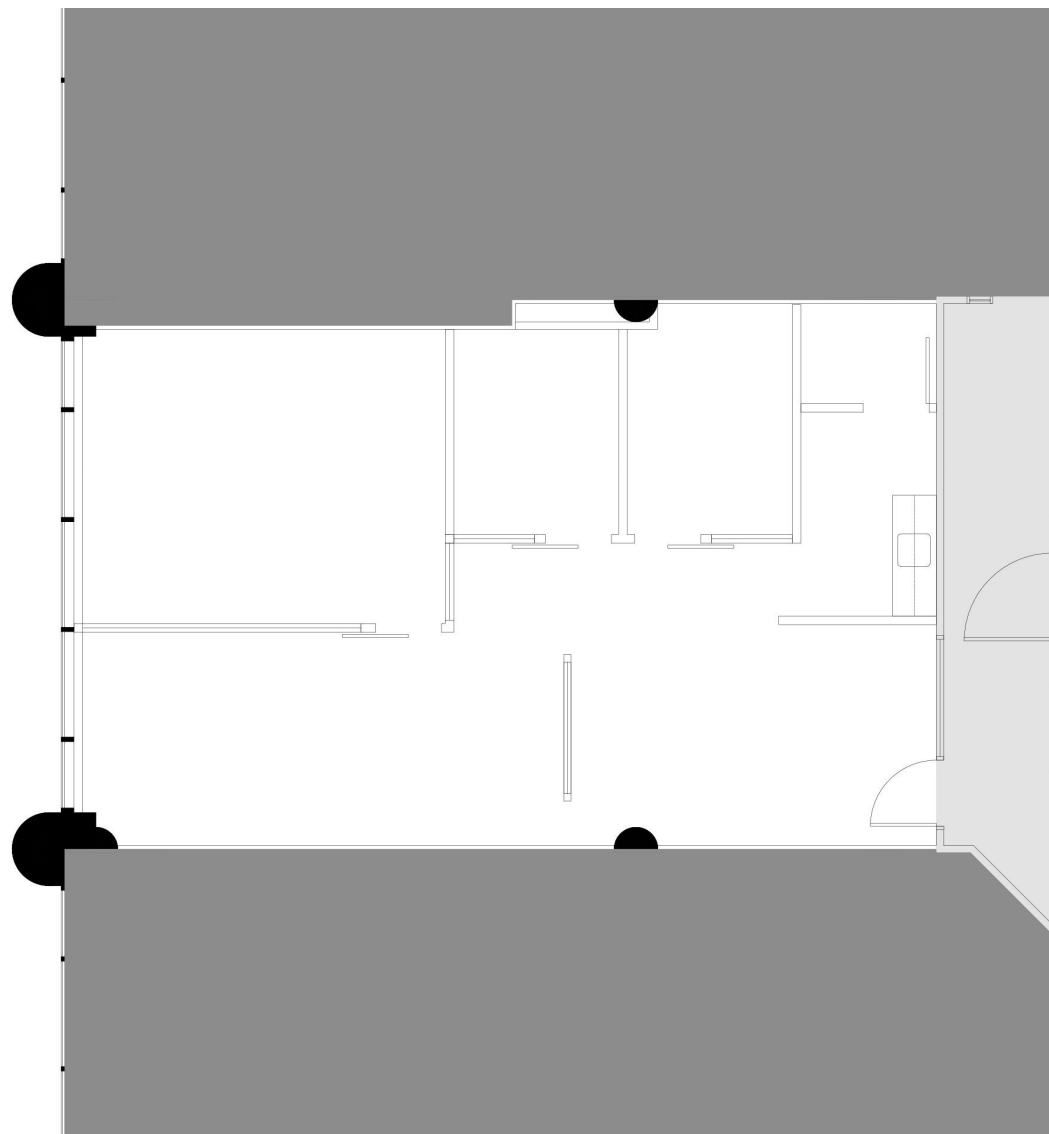


PRIME OFFICE SPACE FOR LEASE

Purdy's Wharf Tower II Suite 1702

Suite View



KEY PLAN

Purdy's Wharf Tower II
1969 Upper Water St.
Halifax Canada B3J 3R7

TECHNICAL INFORMATION

SUITE: 17th floor, Suite 1702
RENTABLE AREA: 1,114 sq.ft.

BUILDING DESCRIPTION

Purdy's Wharf Tower Two is a 22-storey Class "AAA" office building that is the prominent business address in Halifax. It is attractively located on the Waterfront and is connected to the Pedway system in Halifax's Central Business District. The building features a striking coloured glass and concrete exterior and the complex dominates the Halifax skyline.

CONTACT INFORMATION

GWL Realty Advisors Inc
(902) 421-1122
pwoneserve@gwira.com

