

# 660 Henderson Drive

660 Henderson Drive  
Regina, Saskatchewan  
[www.cbre.ca](http://www.cbre.ca)

3,873 SF of Industrial Space For Lease



# Property Overview

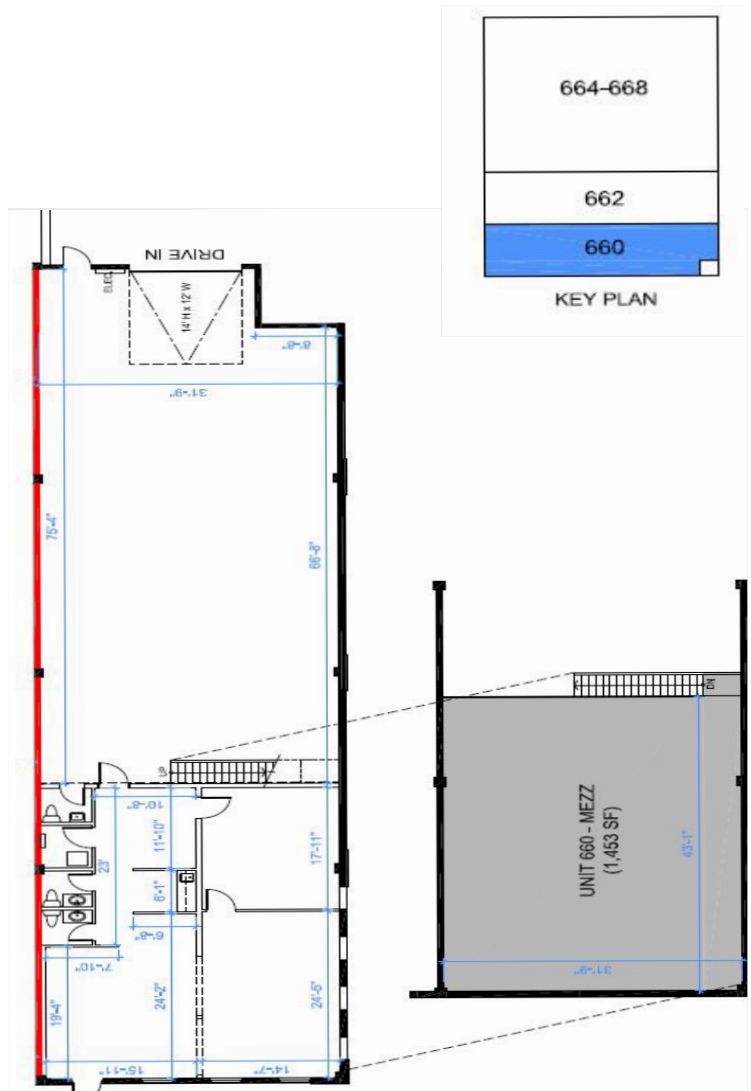
This spacious industrial unit offers a total of 3,873 square feet of available space, with an additional 1,453 square feet on the mezzanine level.

Available March 1, 2025 with a gross monthly rent of \$4,841.00 plus Utilities, the unit features one 14' grade level overhead door.

Contact us today for more information.

## Details

- + **Gross Rent:** \$4,841.00  
Per Month + Utilities
- + **Available Space:** 3,873 SF
- + **Mezzanine Size:** 1,453 SF
- + **Availability:** March 1, 2025



## Contact Us

### Walker Moulding

Associate Vice President  
+1 306 501 0609  
walker.moulding@cbre.com

### Erik Mehlsen

Sales Associate  
+1 306 539 9754  
erik.mehlsen@cbre.com

### Mariah Taylor-Mackin

Client Services Assistant  
+1 306 525 2273  
mariah.taylormackin@cbre.com

© 2023 CBRE, Inc. All rights reserved. This disclaimer shall apply to CBRE Limited, and to all divisions of the Corporation ("CBRE"). The information set out herein (the "Information") has not been verified by CBRE, and CBRE does not represent, warrant or guarantee the accuracy, correctness and completeness of the Information. CBRE does not accept or assume any responsibility or liability, direct or consequential, for the Information or the recipient's reliance upon the Information. The recipient of the Information should take such steps as the recipient may deem necessary to verify the Information prior to placing any reliance upon the Information. The Information may change and any property described in the Information may be withdrawn from the market at any time without notice or obligation to the recipient from CBRE.