

FOR LEASE

HOPEWELL CORPORATE CENTRE
2618 HOPEWELL PLACE NE
SUITES 210 & 230

PROPERTY FACTS

ADDRESS: 2618 Hopewell Place
LOCATION: Northeast
BUILDING CLASS: A
TOTAL BUILDING SIZE: 76,812 SF
TYPICAL FLOOR PLATE: 16,569 SF
YEAR BUILT: 2006
NUMBER OF FLOORS: 5
SURFACE PARKING: 1 stall per 375 SF
leased at no charge
UNDERGROUND PARKING: 1 stall per 1,600 SF
leased at \$150/mo
PARKADE HEIGHT: 6'6"
CERTIFICATIONS: BOMA Best
FIBER OPTIC PROVIDERS: Telus & Shaw

SUITE 210 & 230 AREA: 9,415 SF
RENTAL RATE: Market
OPERATING COSTS: \$14.08 PSF/Annum
(2021 Est.)
TERM: 5-10 Years
AVAILABLE: 30 days' notice

- Conveniently located at the intersection of Barlow Trail & McKnight Blvd.
- Attractive new generation building with underground and surface parking.



BentallGreenOak 

PAIGE MAGNUSSEN
LEASING MANAGER, REAL ESTATE SERVICES
403-303-2483
PAIGE.MAGNUSSEN@BENTALLGREENOAK.COM

HOPEWELL CORPORATE CENTRE
2618 HOPEWELL PLACE NE

FOR LEASE

HOPEWELL CORPORATE CENTRE
2618 HOPEWELL PLACE NE
SUITES 210 & 230



BentallGreenOak 

PAIGE MAGNUSSEN
LEASING MANAGER, REAL ESTATE SERVICES
403-303-2483
PAIGE.MAGNUSSEN@BENTALLGREENOAK.COM

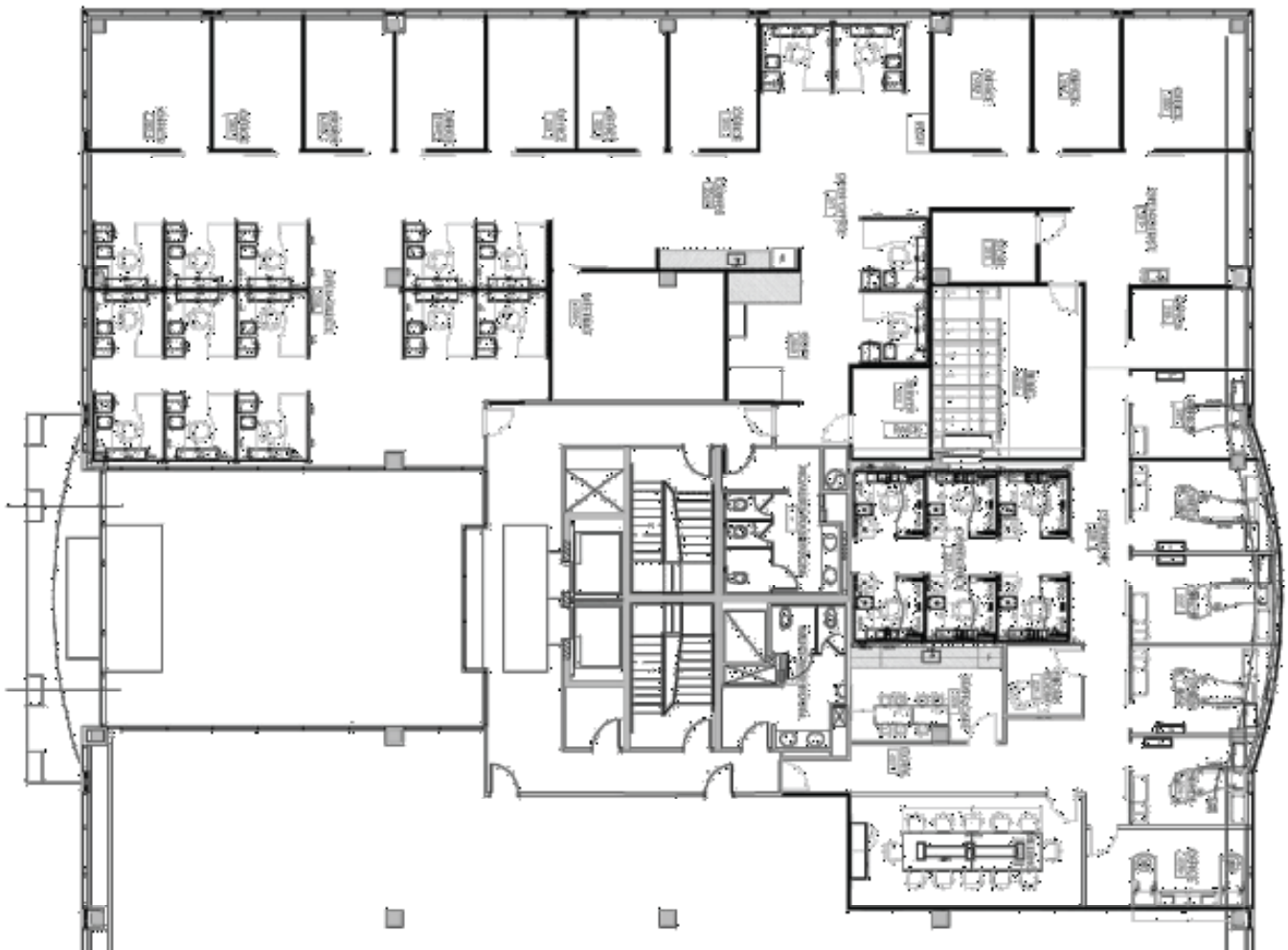
HOPEWELL CORPORATE CENTRE
2618 HOPEWELL PLACE NE

FOR LEASE

HOPEWELL CORPORATE CENTRE
2618 HOPEWELL PLACE NE
SUITES 210 & 230

SUITE 210, 230 | FLOOR PLAN

- 17 Exterior offices
- Open work stations
- Kitchen and staff lounge
- Kitchenette
- 2 Meeting rooms
- Filing room
- Phone room
- 2 Storage rooms
- Copy room



BentallGreenOak 

PAIGE MAGNUSSEN
LEASING MANAGER, REAL ESTATE SERVICES
403-303-2483
PAIGE.MAGNUSSEN@BENTALLGREENOAK.COM

HOPEWELL CORPORATE CENTRE
2618 HOPEWELL PLACE NE