



WONDERLAND CORNERS

London, Ontario

Wonderland Corners is a 47,331 square foot neighbourhood centre with a mix of retail and office that is situated in the northwest quadrant of London, Ontario, just one block north of the Wonderland Road and Oxford Street west node. The shopping centre is currently anchored by Swiss Chalet and a host of other diverse food and retail tenants.



WONDERLAND CORNERS
735 Wonderland Road North
London, ON N6H 4L1
Phone 519-624-0004

CENTRE PROFILE

Total Square Feet	47,331
Total SF of CRU Tenants	26,887
Number of Stores/Services	17
Number of Levels	2
Number of Parking Spaces	193

MAJOR TENANTS

Swiss Chalet	8,050 SF
Office	12,394 SF

MARKET DEMOGRAPHICS

Primary Trade Area

Population	69,566
Number of Households	30,196
Average Household Income	\$85,374

Secondary Trade Area

Population	173,362
Number of Households	78,687
Average Household Income	\$95,190

Traffic

Annual Pedestrian Traffic	438,000
---------------------------	---------

Source:
Market Demographics: Environics Analytics,
DemoStats Trends, 2020.

WONDERLAND CORNERS

TENANT LIST

GENERAL MERCHANDISE & VARIETY

Mac's Convenience	10
-------------------	----

SPECIALTY FOOD

European Delights	13
Malubianian Hot Pot	23
Sugar Marmalade	14
The Alley Bubble Tea	15
The Ravenous Taotie	11

FAST FOOD

Tony's Pizza	16
--------------	----

RESTAURANTS

Cochin Delights	18
Congee Chan	20/21

SERVICES

Function First	205
London City Dental	19
London North Animal Hospital	22
YMCA	200/207

OFFICE

Edward Jones	203
Robinson-Blokker Lawyers	202

MAJOR TENANTS

Swiss Chalet	25
--------------	----

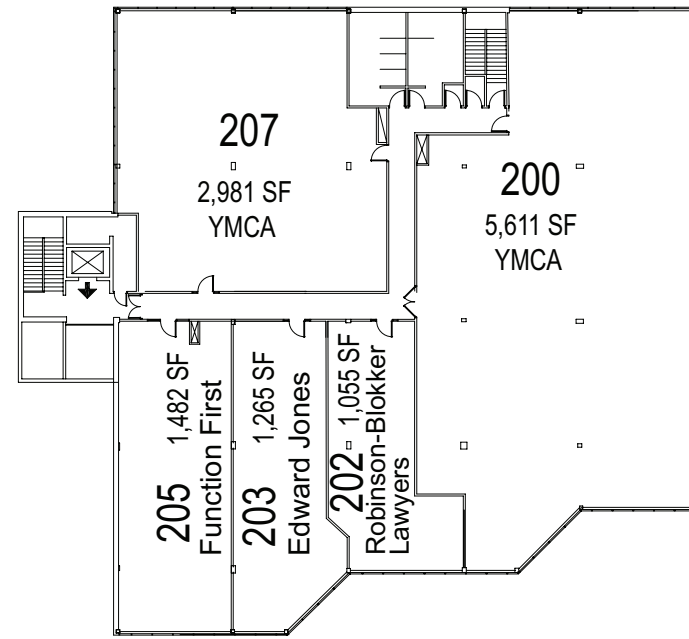
LEASING INQUIRIES

Morguard Brokerage
55 City Centre Drive, Suite 800, Mississauga, ON L5B 1M3
Phone 905-281-3800 Toll Free 1-800-928-6255
leasing@morguard.com
morguard.com

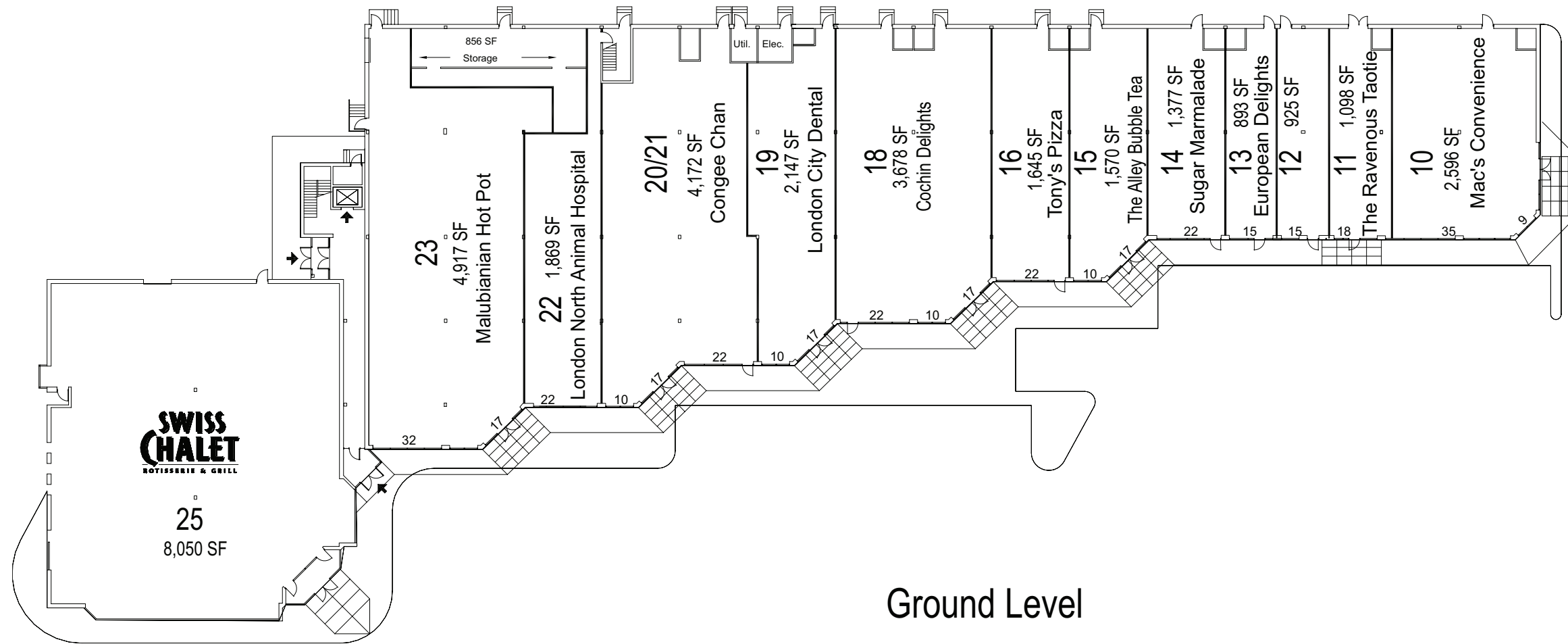
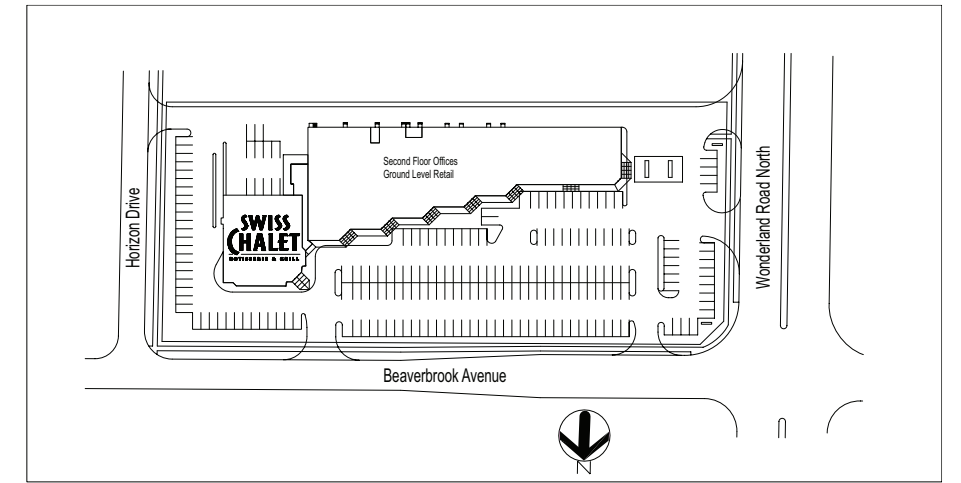


Real Estate Potential. Realized.

WONDERLAND CORNERS



Upper Level



Ground Level